

Creating/Editing a Lesson



1. Click the **Lesson Planner** icon in the navigation bar.

Quick Note

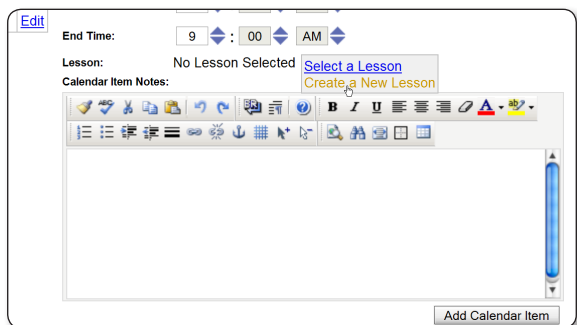
In order to use the lesson planning tool, you must have at least one unit on your landscape map.

Managing Activities



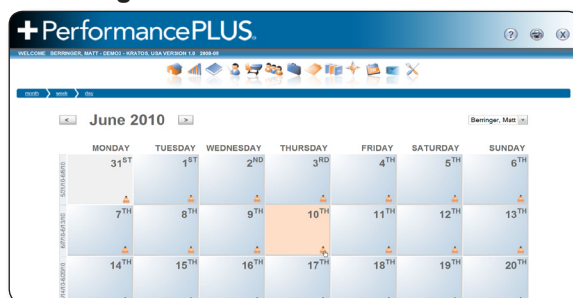
1. The Day View screen appears.
2. To add or edit activities, click the **Manage Daily Calendar** link.

Teaching a New Lesson



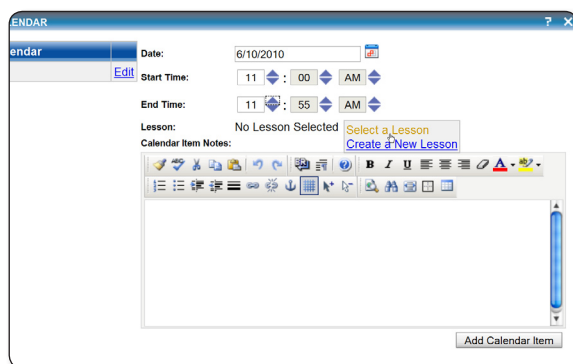
1. From the Manage Activities screen, hover over the **No Lessons Selected** text and click the **Teach a New Lesson** link.

Choosing Lesson Date



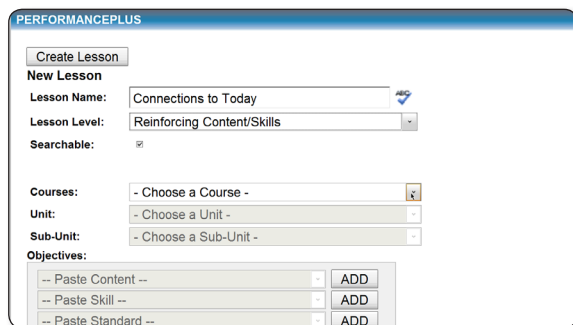
1. The Month View screen appears.
2. Click the **Pencil** icon on the desired day to access the day view.

Adding an Activity or Existing Lesson



1. The Manage Daily Calendar screen appears.
2. To enter a new activity or existing lesson, enter the desired date, time range, and notes.
3. Click the **Edit** link in the Daily Calendar table to edit an existing activity or lesson.
4. If the activity is an existing lesson, hover over the **No Lessons Selected** text to attach an existing lesson.
5. Click the **Add Calendar Item** button to save the entry.

Adding Lesson Details



2. Enter the lesson details using the drop-down boxes* and text boxes provided.
3. Click the **Create Lesson** button.
4. Click the **Select this Lesson** button.
5. Enter the desired date, time, and notes for this lesson.
6. Click the **Add Calendar Item** button.

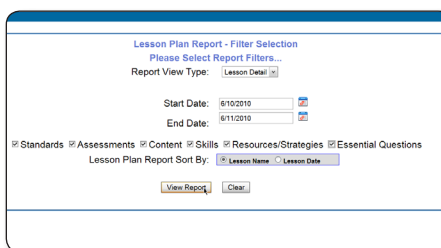
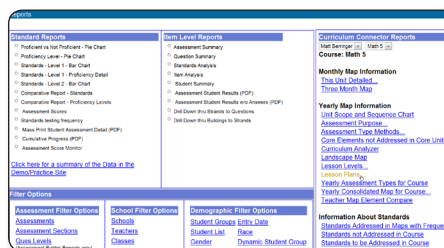
Quick Note

*If objectives have been entered on the landscape map, use the drop-down box to select them.

Lesson Plan Report — With this report, a user can view the details of the information included in a lesson.

To view the Lesson Plan Report:

1. Click the **Reports** icon.
2. Click the **Lesson Plans** link.
3. Enter the desired report type.
4. Enter the desired dates.
5. Select the elements to show.
6. Click the **View Report** button.



+PerformancePLUS		Lesson Plan Report	
Teacher: Mrs. Smith Course: FL Literature		Start Date: 6/10/2010 End Date: 6/11/2010	
Lesson Name	Date		
Connections to Today	6/10/2010 8:00AM - 9:00AM		
Level: Reinforcing Concept/Skills			
Activities: Discuss how contemporary writers and cartoonist have followed Swift's examples of creating satirical pieces in order to suggest reform in society. Review the idea of "Shrek" and political cartoons. See assessment (Original Satire) for assignment			
Aligned Skills <ul style="list-style-type: none"> - analyze and compare a variety of traditional, classical, and contemporary literary works, and identify the literary elements of each. - produce an original piece of satire. 			
Aligned Assessments Original Satire			
Directions: Produce an original piece of satire for today's society. Piece will satirize a political, social, or economic event			
Product: Options include: -short writing -original cartoon Other options will be accepted pending on teachers approval			
Aligned Standards LA.910.2.1.2 ~ analyze and compare a variety of traditional, classical, and contemporary literary works, and identify the literary elements of each (e.g., setting, plot, characterization, conflict); LA.910.6.3.2 ~ ethically use mass media and digital technology assignments and presentations, citing sources according to the standardized citation styles			